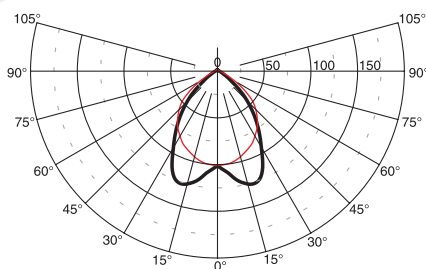
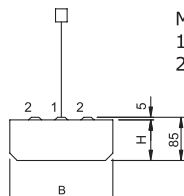
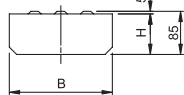
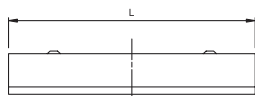


Ceiling and suspended luminaires - separate



11-013/236



Mounting holes:
1 - single lamp luminaires
2 - double and more lamp luminaires

Material:

- body – a steel sheet finished by powder technology
- color – white RAL 9003
- louvre – highly polished or matted double parabolic louvre made of an aluminium sheet; polished or matted Christmas tree louvre; white louvre
- cover – prismatic or opaline

Degree of protection: IP 20

Rated voltage: 230V/50Hz

Control gear:

standard or electronic ballast, dimmable ballast on request, the luminaires are offered also in emergency version

Mounting:

separate mounting on a ceiling; on wire and tube pendants

Accessories:

wire and tube pendants (must be ordered separately)

pendants for one lamp luminaires

length(mm)	without power supply cable	with p. s.c. 3x1,5mm ²	with p. s.c. 5x1,5mm ²
1200 (wires)	99-080/120	99-081/120	99-082/120
400 (tubes)	99-090/040	99-091/040	99-092/040
600 (tubes)	99-090/060	99-091/060	99-092/060
900 (tubes)	99-090/090	99-091/090	99-092/090
1200 (tubes)	99-090/120	99-091/120	99-092/120

pendants for two lamp luminaires

length(mm)	without power supply cable	with p. s.c. 3x1,5mm ²	with p. s.c. 5x1,5mm ²
1200 (wires)	99-083/120	99-084/120	99-085/120
400 (tubes)	99-093/040	99-094/040	99-095/040
600 (tubes)	99-093/060	99-094/060	99-095/060
900 (tubes)	99-093/090	99-094/090	99-095/090
1200 (tubes)	99-093/120	99-094/120	99-095/120

Application:

- reception desks
- corridors
- shops
- counters

Code	Power	Louvre	Lamp	Cap	LxBxH (mm)	kg
11-013/118/ [1][2]	1x18W	A,B,C,D,J,X,Z	T8 lamp	G13	638x207x80	2,7
11-013/136/ [1][2]	1x36W	A,B,C,D,J,X,Z	T8 lamp	G13	1248x207x80	4,5
11-013/158/ [1][2]	1x58W	A,B,C,D,J,X,Z	T8 lamp	G13	1548x207x80	5,4
11-013/218/ [1][2]	2x18W	A,B,C,D,J,X,Z	T8 lamp	G13	638x336x80	3,3
11-013/236/ [1][2]	2x36W	A,B,C,D,E,F,J,X,Z	T8 lamp	G13	1248x336x80	6,8
11-013/258/ [1][2]	2x58W	A,B,C,D,E,F,J,X,Z	T8 lamp	G13	1548x336x80	7,9
11-013/318/ [1][2]	3x18W	A,B,C,D,E,F,J,X,Z	T8 lamp	G13	638x490x80	4,9
11-013/336/ [1][2]	3x36W	A,B,C,D,E,F,J,X,Z	T8 lamp	G13	1248x490x80	8,0
11-013/358/ [1][2]	3x58W	A,B,C,D,E,F,J,X,Z	T8 lamp	G13	1548x490x80	10,1
11-013/418/ [1][2]	4x18W	A,B,C,D,E,F,J,X,Z	T8 lamp	G13	638x632x80	5,7
11-013/436/ [1][2]	4x36W	A,B,C,D,E,F,J,X,Z	T8 lamp	G13	1248x632x80	10,4
11-013/458/ [1][2]	4x58W	A,B,C,D,E,F,J,Z	T8 lamp	G13	1548x632x80	13,5

[1] - B (standard ballast)

[2] - A (white louvre)

- C (matted parabolic louvre, 60°)

- E (highly polished parabolic louvre)

- J (matted Christmas tree louvre)

- Z (opaline cover)

- C (electronic ballast)

- B (highly polished parab. louvre, 60°)

- D (polished Christmas tree louvre)

- F (polished Christmas tree louvre)

- X (prismatic cover)



Ceiling luminaires with compact lamps



Material:

- body – a steel sheet finished by powder technology varnishing
- color – white RAL 9003
- louvre – highly polished or matted double parabolic louvre made of an aluminium sheet; polished or matted Christmas tree louvre; white louvre

Degree of protection: IP 20

Rated voltage: 230V/50Hz

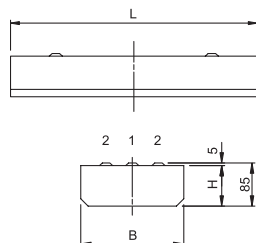
Control gear:

standard or electronic ballast, dimmable ballast on request; the luminaires are offered also in emergency version

Mounting: separate mounting on a ceiling

Application:

- corridors
- shops
- counters
- computer labs
- cafeterias



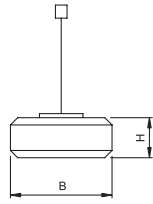
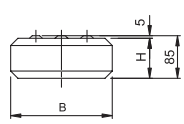
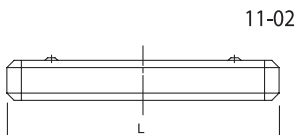
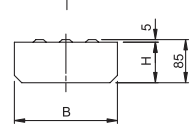
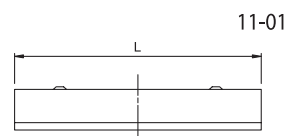
Mounting holes:
1 - single lamp luminaires
2 - double and more lamp luminaires

Code	Power	Louvre	Lamp	Cap	LxBxH (mm)	kg
11-014/236/1 2	2x36W	B,C,D,E,F,J	compact fl. lamp	2G11	480x336x80	3,0
11-014/255/C 2	2x55W	B,C,D,E,F,J	compact fl. lamp	2G11	600x336x80	3,1
11-014/336/1 2	3x36W	B,C,D,E,F,J	compact fl. lamp	2G11	480x492x80	4,5
11-014/355/C 2	3x55W	B,C,D,E,F,J	compact fl. lamp	2G11	600x492x80	4,6

- 1 - B (standard ballast)
- 2 - B (highly polished parab. louvre, 60°)
- C (electronic ballast)
- C (matted parabolic louvre, 60°)
- D (polished Christmas tree louvre)
- E (highly polished parabolic louvre)
- F (matted parabolic louvre)
- J (matted Christmas tree louvre)

Ceiling or suspended luminaires

- asymmetric reflector
- 11-01 separate
- 11-02 coupling in lines



Material:

- body – a steel sheet finished by powder technology varnishing
- color – white RAL 9003
- reflector – a polished aluminium sheet (asymmetric profile)

Degree of protection: IP 20

Rated voltage: 230V/50Hz

Control gear:

standard or electronic ballast, dimmable ballast on request; the luminaires are offered also in emergency version

Mounting:

separate mounting (series 11-01) on a ceiling; on wire or tube pendants; coupling in lines (series 11-02)

Accessories:

(must be ordered separately) wire and tube pendants; plastic endings for coupling luminaires

pendants for luminaires

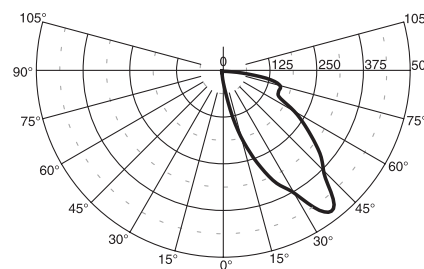
length(mm)	without power supply cable	with p. s.c. 3x1,5 mm ²	with p. s.c. 5x1,5 mm ²
1200 (wires)	99-083/120	99-084/120	99-085/120
400 (tubes)	99-093/040	99-094/040	99-095/040
600 (tubes)	99-093/060	99-094/060	99-095/060
900 (tubes)	99-093/090	99-094/090	99-095/090
1200 (tubes)	99-093/120	99-094/120	99-095/120

endings for coupling luminaires

99-104

Application:

- corridors
- shops
- counters
- computer labs
- cafeterias



11-013/136

Code	Power	Lamp	Cap	LxBxH (mm)	kg
11-013/136/I	1x36W	T8 lamp	G13	1248x336x80	4,5
11-013/158/I	1x58W	T8 lamp	G13	1548x336x80	5,4
11-023/136/I	1x36W	T8 lamp	G13	1240x336x80	4,5
11-023/158/I	1x58W	T8 lamp	G13	1540x336x80	5,4

- I - B (standard ballast)
- C (electronic ballast)



Ceiling and suspended

- separate
- coupling in lines
- fit to lighting systems

Material:

- body – a steel sheet finished by powder technology varnishing
- color – white RAL 9003
- louvre – highly polished or matted double parabolic louvre made of an aluminium sheet; polished or matted Christmas tree louvre; white louvre

Degree of protection: IP 20

Rated voltage: 230V/50Hz

Control gear: standard or electronic ballast, dimmable ballast on request, the luminaires are offered also in emergency version

Mounting: directly on a ceiling or on pendants - separate, coupled in lines or in lighting systems (see Coupling agents of fluorescent luminaires)

Accessories: (must be ordered separately)

plastic endings

99-103 (for one lamp luminaires)

99-104 (for two lamp luminaires)

pendants for one lamp luminaires

length(mm)	without power supply cable	with p. s.c. 3x1,5mm ²	with p. s.c. 5x1,5mm ²
1200 (wires)	99-080/120	99-081/120	99-082/120
400 (tubes)	99-090/040	99-091/040	99-092/040
600 (tubes)	99-090/060	99-091/060	99-092/060
900 (tubes)	99-090/090	99-091/090	99-092/090
1200 (tubes)	99-090/120	99-091/120	99-092/120

pendants for two lamp luminaires

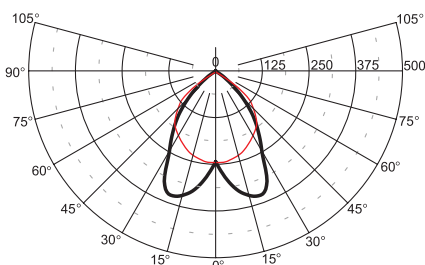
length(mm)	without power supply cable	with p. s.c. 3x1,5mm ²	with p. s.c. 5x1,5mm ²
1200 (wires)	99-083/120	99-084/120	99-085/120
400 (tubes)	99-093/040	99-094/040	99-095/040
600 (tubes)	99-093/060	99-094/060	99-095/060
900 (tubes)	99-093/090	99-094/090	99-095/090
1200 (tubes)	99-093/120	99-094/120	99-095/120

Application:

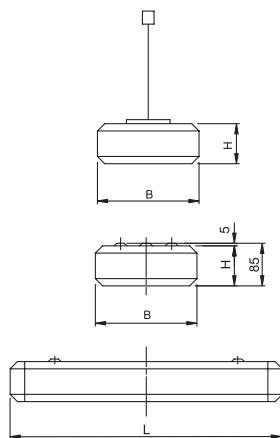
- reception desks
- corridors and stairways
- counters
- computer labs

Mounting holes:

- 1 - single lamp luminaires
- 2 - double and more lamp luminaires



11-023/236



Code	Power	Louvre	Lamp	Cap	LxBxH (mm)	kg
11-023/118/1 2	1x18W	A,B,C,D,E,F,J,X	T8 lamp	G13	630x207x80	2,7
11-023/136/1 2	1x36W	A,B,C,D,E,F,J,X	T8 lamp	G13	1240x207x80	4,5
11-023/158/1 2	1x58W	A,B,C,D,E,F,J,X	T8 lamp	G13	1540x207x80	5,4
11-023/218/1 2	2x18W	A,B,C,D,E,F,J,X	T8 lamp	G13	630x336x80	3,3
11-023/236/1 2	2x36W	A,B,C,D,E,F,J,X	T8 lamp	G13	1240x336x80	6,8
11-023/258/1 2	2x58W	A,B,C,D,E,F,J,X	T8 lamp	G13	1540x336x80	7,9

1 - B (standard ballast)

2 - A (white louvre)

- C (matted parabolic louvre, 60°)

- E (highly polished parabolic louvre)

- J (matted Christmas tree louvre)

- C (electronic ballast)

- B (highly polished parabol. louvre, 60°)

- D (polished Christmas tree louvre)

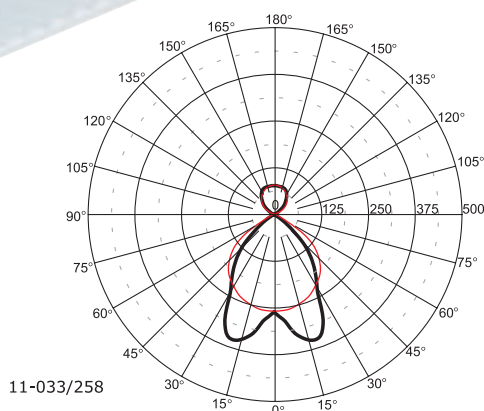
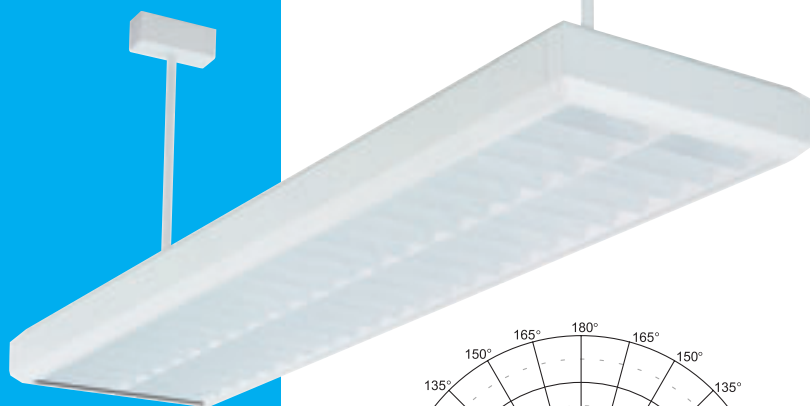
- F (matted parabolic louvre)

- X (prismatic cover)

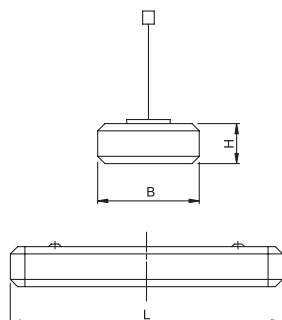


Suspended luminaires

- direct/indirect
- coupling in lines
- fit to lighting systems



11-033/258



Material:

- body – a steel sheet finished by powder technology varnishing
- color – white RAL 9003
- louvre – highly polished or matted double parabolic louvre made of an aluminium sheet; polished or matted Christmas tree louvre; white louvre

Degree of protection: IP 20

Rated voltage: 230V/50Hz

Control gear: standard or electronic ballast, dimmable ballast on request, the luminaires are offered also in emergency version

Mounting: suspended on wire or tube pendants; separate or in lighting systems (see Coupling agents of fluorescent luminaires)

Accessories: (must be ordered separately)

plastic endings

99-103 (for one lamp luminaires)

99-104 (for two lamp luminaires)

pendants for one lamp luminaires

length(mm)	without power supply cable	with p. s.c. 3x1,5mm ²	with p. s.c. 5x1,5mm ²
1200 (wires)	99-080/120	99-081/120	99-082/120
400 (tubes)	99-090/040	99-091/040	99-092/040
600 (tubes)	99-090/060	99-091/060	99-092/060
900 (tubes)	99-090/090	99-091/090	99-092/090
1200 (tubes)	99-090/120	99-091/120	99-092/120

pendants for two lamp luminaires

length(mm)	without power supply cable	with p. s.c. 3x1,5mm ²	with p. s.c. 5x1,5mm ²
1200 (wires)	99-083/120	99-084/120	99-085/120
400 (tubes)	99-093/040	99-094/040	99-095/040
600 (tubes)	99-093/060	99-094/060	99-095/060
900 (tubes)	99-093/090	99-094/090	99-095/090
1200 (rubes)	99-093/120	99-094/120	99-095/120

Application:

- reception desks
- shops
- counters
- computer labs
- cafeterias

Code	Power	Louvre	Lamp	Cap	LxBxH (mm)	kg
11-033/118/1 2	1x18W	A,B,C,D,E,F,J,X	T8 lamp	G13	638x207x80	2,7
11-033/136/1 2	1x36W	A,B,C,D,E,F,J,X	T8 lamp	G13	1248x207x80	4,5
11-033/158/1 2	1x58W	A,B,C,D,E,F,J,X	T8 lamp	G13	1548x207x80	5,4
11-033/218/1 2	2x18W	A,B,C,D,E,F,J,X	T8 lamp	G13	638x336x80	3,3
11-033/236/1 2	2x36W	A,B,C,D,E,F,J,X	T8 lamp	G13	1248x336x80	6,8
11-033/258/1 2	2x58W	A,B,C,D,E,F,J,X	T8 lamp	G13	1548x336x80	7,9

1 - B (standard ballast)

2 - A (white louvre)

- C (matted parabolic louvre, 60°)

- E (highly polished parabolic louvre)

- J (matted Christmas tree louvre)

- C (electronic ballast)

- B (highly polished parab. louvre, 60°)

- D (polished Christmas tree louvre)

- F (matted parabolic louvre)

- X (prismatic cover)



Coupling agents of fluorescent luminaires

series 11, 12, 13



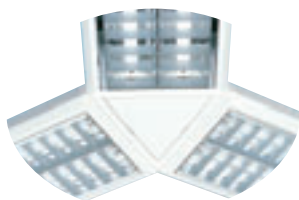
A



B



C



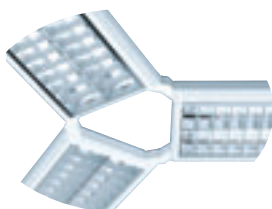
D



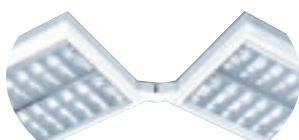
E



F



G



H

Specification:

- fixed or adjustable universal coupling agents of the series 11 Gemma, 12 - Gemini, 13 - Pavo
- mounting both suspended and ceiling
- the couplings are designed to pull through the feeding cables

Couplings:

• fixed:

	GEMMA		GEMINI a PAVO	
	single lamp l.	double lamp l.	single lamp l.	double lamp l.
A - a square coupling for fixed coupling of four luminaires in a cross	99-321	99-331	99-361	99-371
B - a square coupling for fixed coupling of three luminaires in "T" shape	99-322	99-332	99-362	99-372
C - a square coupling for fixed coupling of two luminaires in right angle	99-323	99-333	99-363	99-373
D - a triangle coupling for fixed coupling of three luminaires in the shape of a star	99-325	99-335	99-365	99-375
E - a triangle coupling for fixed coupling of two luminaires in the angle of 120°	99-326	99-336	99-366	99-376

• adjustable:

- a corner coupling adjustable in the range 30-150°
- a discoid coupling adjusting two luminaires in the range: 65-295° one-lamp luminaires of the series 11, 12, 13 90-180° two-lamp luminaires of the series 11 75-285° with the series 12, 13

	GEMMA		GEMINI a PAVO	
	single lamp l.	double lamp l.	single lamp l.	double lamp l.
F - a discoid coupling for revolving coupling of two luminaires	99-421	99-431	99-461	99-471
G - a corner coupling for revolving coupling of three or more luminaires	-	-	99-462	99-472
H - a corner coupling for revolving coupling of two luminaires (30-150°)	-	-	99-463	99-473

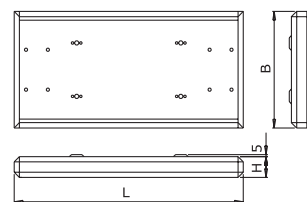


Plain module



F

Emergency module



Plain modules	Code	LxBxH	Code	LxBxH
	11-000/118	630x207x80	12-000/118	630x195x60
	11-000/136	1240x207x80	12-000/136	1240x195x60
	11-000/158	1540x207x80	12-000/158	1540x195x60
	11-000/218	630x336x80	12-000/218	630x266x60
	11-000/236	1240x336x80	12-000/236	1240x266x60
Emergency modules	11-000/258	1540x336x80	12-000/258	1540x266x60
- luminous sign	11-003/118	630x207x80	12-003/118	630x195x60
	11-003/218	630x336x80	12-003/218	630x266x60
- sign module	11-100/118	630x207x80	12-100/118	630x195x60
	11-100/218	630x336x80	12-100/218	630x266x60
- luminous sign with inverter	11-103/118	630x207x80	12-103/118	630x195x60
	11-103/218	630x336x80	12-103/218	630x266x60