

Luminaires for indoor sports areas - ceiling



Material:

- body – a steel sheet finished by powder technology varnishing
- color – white RAL 9003
- louvre – white steel louvre, reinforced with steel rods, protecting the lamps from ball bumps

Degree of protection: IP 20

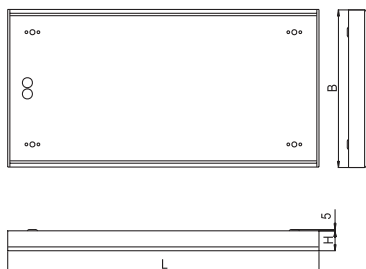
Rated voltage: 230V/50Hz

Control gear: standard or electronic ballast, dimmable ballast on request; the luminaires are offered also in emergency version

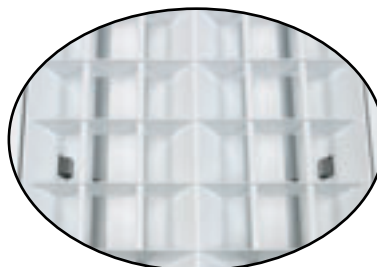
Mounting: directly on a ceiling

Application:
gymnasiums

Shockproof test according to DIN 18032



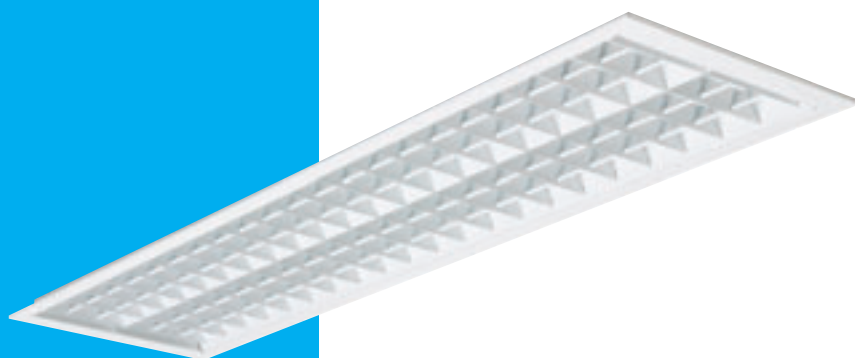
Safety locks protected
against drop out of the louvre



Code	Power	Lamp	Cap	LxBxH (mm)	kg
17-013/236/ □	2x36W	T8 lamp	G13	1248x336x80	8,5
17-013/258/ □	2x58W	T8 lamp	G13	1548x336x80	11,0
17-013/336/ □	3x36W	T8 lamp	G13	1248x492x80	12,2
17-013/358/ □	3x58W	T8 lamp	G13	1548x492x80	14,1
17-013/436/ □	4x36W	T8 lamp	G13	1248x632x80	14,2
17-013/458/ □	4x58W	T8 lamp	G13	1548x632x80	18,0

□ - B (standard ballast) - C (electronic ballast)

Luminaires for indoor sports areas - recessed



Material:

- body – a steel sheet finished by powder technology varnishing
- color – white RAL 9003
- louvre – white steel louvre, reinforced with steel rods, protecting the lamps from ball bumps

Degree of protection: IP 20

Rated voltage: 230V/50Hz

Control gear: standard or electronic ballast, dimmable ballast on request; the luminaires are offered also in emergency version

Mounting: universal mounting in ceiling systems M625 and in plaster ceiling

Accessories: (must be ordered separately) steel holders (four pieces for one luminaire needed)

99-298 in ceiling systems (4pcs)

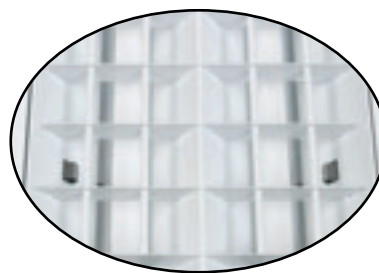
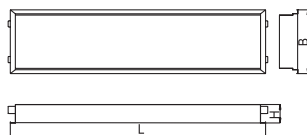
99-299 in plaster ceilings (4pcs)

Application:

- gymnasiums
- sporting halls
- sport clubs

Shockproof test according to DIN 18032

Safety locks protected against drop out of the louvre



Code	Power	Lamp	Cap	LxBxH (mm)	Module	Hole cut out (mm)	kg
17-033/236/ [1]	2x36W	T8 lamp	G13	1248x311x90	M625	1175x275	8,5
17-033/258/ [1]	2x58W	T8 lamp	G13	1548x311x90	M625	1474x275	11,0
17-033/336/ [1]	3x36W	T8 lamp	G13	1248x622x90	M625	1175x580	12,2
17-033/358/ [1]	3x58W	T8 lamp	G13	1548x622x90	M625	1475x580	14,1
17-033/436/ [1]	4x36W	T8 lamp	G13	1248x622x90	M625	1175x580	14,2
17-033/458/ [1]	4x58W	T8 lamp	G13	1548x622x90	M625	1475x580	18,0

[1] - B (standard ballast) - C (electronic ballast)