

Trunking systems



Trunking section:

- material: a white rough varnished steel sheet, interconnecting unit for connecting the bars. Interconnection by five or seven core cables
- color: white RAL 9003
- mounting: mounting on a ceiling or on chain pendants, the luminaires can be connected by connectors

Luminaire:

- material: a white rough varnished steel sheet. A clutch for quick fastening to the trunkings.
- color: white RAL 9003
- mounting: right on the trunkings
- reflector: white varnished steel sheet

Degree of protection: IP 20

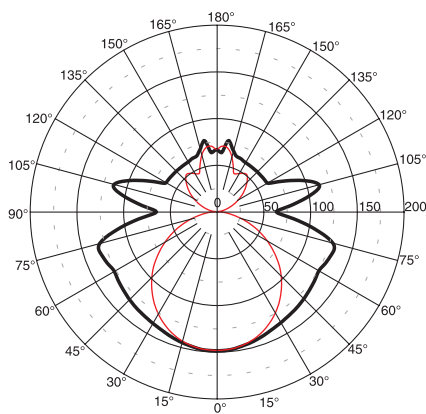
Rated voltage: 230V/50Hz

Control gear: standard or electronic ballast

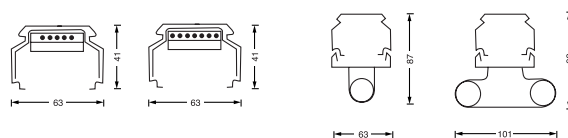
Accessories: see page Accessories of the series 20

Application:

- supermarkets
- factory halls
- storehouses



20-013/258



Code	Description	Cable	Cap	L (mm)
20-050/236	2 luminaires 36W	five core mains cable	G13	2460
20-050/258	2 luminaires 58W	five core mains cable	G13	3060
20-050/336	3 luminaires 36W	five core mains cable	G13	3690
20-050/358	3 luminaires 58W	five core mains cable	G13	4590
20-070/236	2 luminaires 36W	seven core mains cable	G13	2460
20-070/258	2 luminaires 58W	seven core mains cable	G13	3060
20-070/336	3 luminaires 36W	seven core mains cable	G13	3690
20-070/358	3 luminaires 58W	seven core mains cable	G13	4590

Code	Power	Lamp	Cap	L (mm)
20-013/136/□	1x36W	T8 lamp	G13	1230
20-013/158/□	1x58W	T8 lamp	G13	1530
20-013/236/□	2x36W	T8 lamp	G13	1230
20-013/258/□	2x58W	T8 lamp	G13	1530

□ - B (standard ballast) - C (electronic ballast)



Trunking systems

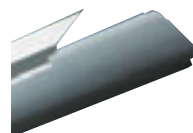
Reflectors



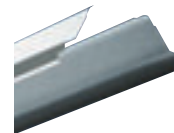
99-240/36
99-240/58
plain reflector



99-260/136
99-260/236
99-260/158
99-260/258
radial reflector

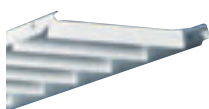


99-280/158
99-280/258
reflector-widebeam
(for 99-260)



99-290/158
99-290/258
reflector-narrowbeam
(for 99-260)

Louvres

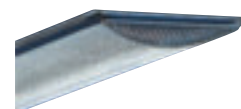


99-250/36
99-250/58
white louvre
(for 99-240)



99-270/136-A
99-270/236-A
99-270/158-A
99-270/258-A
white louvre
(for 99-260)

Prismatic cover



99-270/158-X
99-270/258-X
prismatic cover
(for 99-260)

Accessories of the trunking systems



99-502
hinge for chain



99-503
chain 10m



99-504
ceiling pendant



99-505
trunking section
ending



99-520
wire pendant



plastic: 99-506/36
99-506/58
metal: 99-507/36
99-507/58



99-508/1
99-508/2
plastic connection
of reflector



99-509/1
99-509/2
plastic endings
of reflector



99-510
plastic connection
of reflector



99-511
plastic endings
of reflector