

Recessed luminaires - IP65



Material:

- body – a steel sheet finished by powder technology varnishing
- color – white RAL 9003
- cover – prismatic

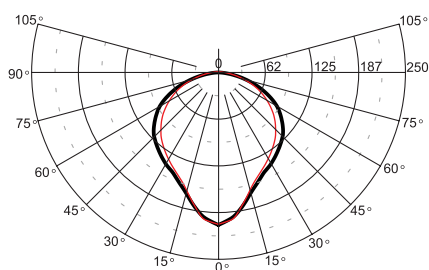
Degree of protection: IP 65

Rated voltage: 230V/50Hz

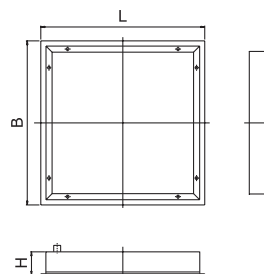
Control gear: standard or electronic ballast, dimmable ballast on request; the luminaires are offered also in emergency version

Mounting: ceiling systems M600 - inlay mounting

Application: hospitals, laboratories, areas with high humidity and dustiness, areas demanding high hygienic standards



36-024/336/CX



Code	Power	Lamp	Cap	LxBxH (mm)	Module	kg
36-023/236/□X	2x36W	T8 lamp	G13	1197x297x100	M600	7,5
36-023/418/□X	4x18W	T8 lamp	G13	595x595x122	M600	8,2
36-024/336/□X	3x36W	compact fl. lamp	2G11	595x595x122	M600	7,7
36-024/355/CX	3x55W	compact fl. lamp	2G11	595x595x122	M600	7,7

□ - B (standard ballast) - C (electronic ballast)

Recessed luminaires - IP65

Material:

- body – a steel sheet finished by powder technology varnishing
- color – white RAL 9003
- cover – prismatic

Degree of protection: IP 65

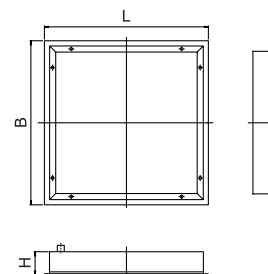
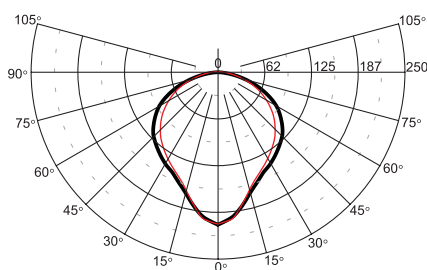
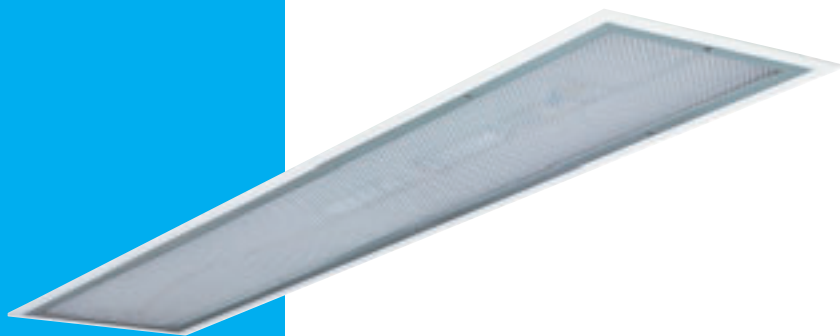
Rated voltage: 230V/50Hz

Control gear: standard or electronic ballast, dimmable ballast on request; the luminaires are offered also in emergency version

Mounting: ceiling systems M625 - universal mounting and mounting in plaster ceilings

Accessories: steel holders (are components of the luminaires)

Application: hospitals, laboratories, areas with high humidity and dustiness, areas demanding high hygienic standards



Code	Power	Lamp	Cap	LxBxH (mm)	Hole cut out (mm)	Module	kg
36-033/136/□X	1x36W	T8 lamp	G13	1247x311x100	1215x297	M625	7,7
36-033/158/□X	1x58W	T8 lamp	G13	1547x311x100	1515x297	M625	8,2
36-033/236/□X	2x36W	T8 lamp	G13	1247x311x100	1215x297	M625	4,9
36-033/258/□X	2x58W	T8 lamp	G13	1547x311x100	1515x297	M625	5,4
36-033/418/□X	4x18W	T8 lamp	G13	622x622x122	591x608	M625	8,4
36-034/336/□X	3x36W	compact fl. lamp	2G11	622x622x122	591x608	M625	8,1
36-034/355/CX	3x55W	compact fl. lamp	2G11	622x622x122	591x608	M625	8,1

□ - B (standard ballast) - C (electronic ballast)

Recessed luminaires - IP 65



Material:

- body – a steel sheet finished by powder technology varnishing
- color – white RAL 9003
- louvre – highly polished parabolic louvre
- cover – safety hardened glass

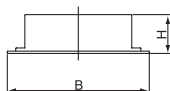
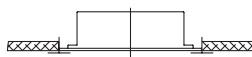
Degree of protection: IP 65

Rated voltage: 230V/50Hz

Control gear: standard or electronic ballast; the luminaires are offered also in emergency version

Mounting: ceiling systems M600 - inlay mounting

Application: chemical laboratories, areas with high humidity and dustiness, hospitals, areas demanding high hygienic standards



Code	Power	Lamp	Cap	LxBxH (mm)	Module	kg
36-043/236/□ BT	2x36W	T8 lamp	G13	1197x297x100	M600	7,6
36-043/418/□ BT	4x18W	T8 lamp	G13	595x595x122	M600	8,1
36-044/336/□ BT	3x36W	compact fl. lamp	2G11	595x595x122	M600	7,8
36-044/355/CBT	3x55W	compact fl. lamp	2G11	595x595x122	M600	7,8

□ - B (standard ballast) - C (electronic ballast)

Recessed luminaires - IP 65



Material:

- body – a steel sheet finished by powder technology varnishing
- color – white RAL 9003
- louvre – highly polished parabolic louvre
- cover – safety hardened glass

Degree of protection: IP 65

Rated voltage: 230V/50Hz

Control gear: standard or electronic ballast; the luminaires are offered also in emergency version

Mounting: in ceiling systems M625 - universal mounting and mounting in plaster ceilings

Accessories: steel holders (are components of the luminaires)

Application: chemical laboratories, areas with high humidity and dustiness, hospitals, areas demanding high hygienic standards



Code	Power	Lamp	Cap	LxBxH (mm)	Hole cut out (mm)	Module	kg
36-053/236/□ BT	2x36W	T8 lamp	G13	1247x311x100	1215x297	M625	7,6
36-053/418/□ BT	4x18W	T8 lamp	G13	622x622x122	591x608	M625	8,5
36-054/336/□ BT	3x36W	compact fl. lamp	2G11	622x622x122	591x608	M625	8,2
36-054/355/C BT	3x55W	compact fl. lamp	2G11	622x622x122	591x608	M625	8,2

□ - B (standard ballast) - C (electronic ballast)

Ceiling luminaires IP65



Material:

- body – a steel sheet finished by powder technology varnishing
- color – white RAL 9003
- cover – prismatic

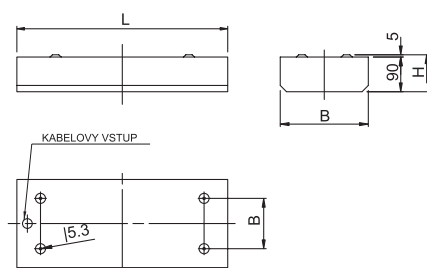
Degree of protection: IP 65

Rated voltage: 230V/50Hz

Control gear: standard or electronic ballast, dimmable ballast on request; the luminaires are offered also in emergency version

Mounting: built-up on a ceiling

Application: hospitals, laboratories, areas with high humidity and dustiness, areas demanding high hygienic standards



Code	Power	Lamp	Cap	LxBxH (mm)
36-063/236/□X	2x36W	T8 lamp	G13	1292x381x95
36-063/258/□X	2x58W	T8 lamp	G13	1592x381x95
36-064/236/□X	2x36W	compact fl. lamp	2G11	482x414x95
36-064/255/CX	2x55W	compact fl. lamp	2G11	604x414x95
36-064/336/□X	3x36W	compact fl. lamp	2G11	482x565x95
36-064/355/CX	3x55W	compact fl. lamp	2G11	604x565x95

□ - B (standard ballast) - C (electronic ballast)

Ceiling luminaires IP65



Material:

- body – a steel sheet finished by powder technology varnishing
- color – white RAL 9003
- louvre – highly polished parabolic louvre
- cover – safety hardened glass

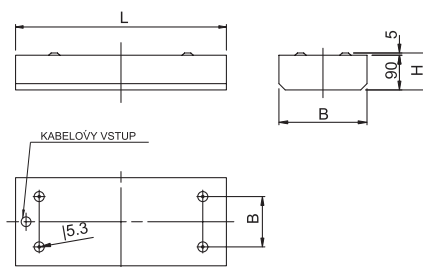
Degree of protection: IP 65

Rated voltage: 230V/50Hz

Control gear: standard or electronic ballast, dimmable ballast on request; the luminaires are offered also in emergency version

Mounting: built-up on a ceiling

Application: hospitals, laboratories, areas with high humidity and dustiness, areas demanding high hygienic standards



Code	Power	Lamp	Cap	LxBxH (mm)
36-073/236/□BT	2x36W	T8 lamp	G13	1292x381x95
36-073/258/□BT	2x58W	T8 lamp	G13	1592x381x95
36-074/236/□BT	2x36W	compact fl. lamp	2G11	482x414x95
36-074/255/CBT	2x55W	compact fl. lamp	2G11	604x414x95
36-074/336/□BT	3x36W	compact fl. lamp	2G11	482x565x95
36-074/355/CBT	3x55W	compact fl. lamp	2G11	604x565x95

□ - B (standard ballast) - C (electronic ballast)